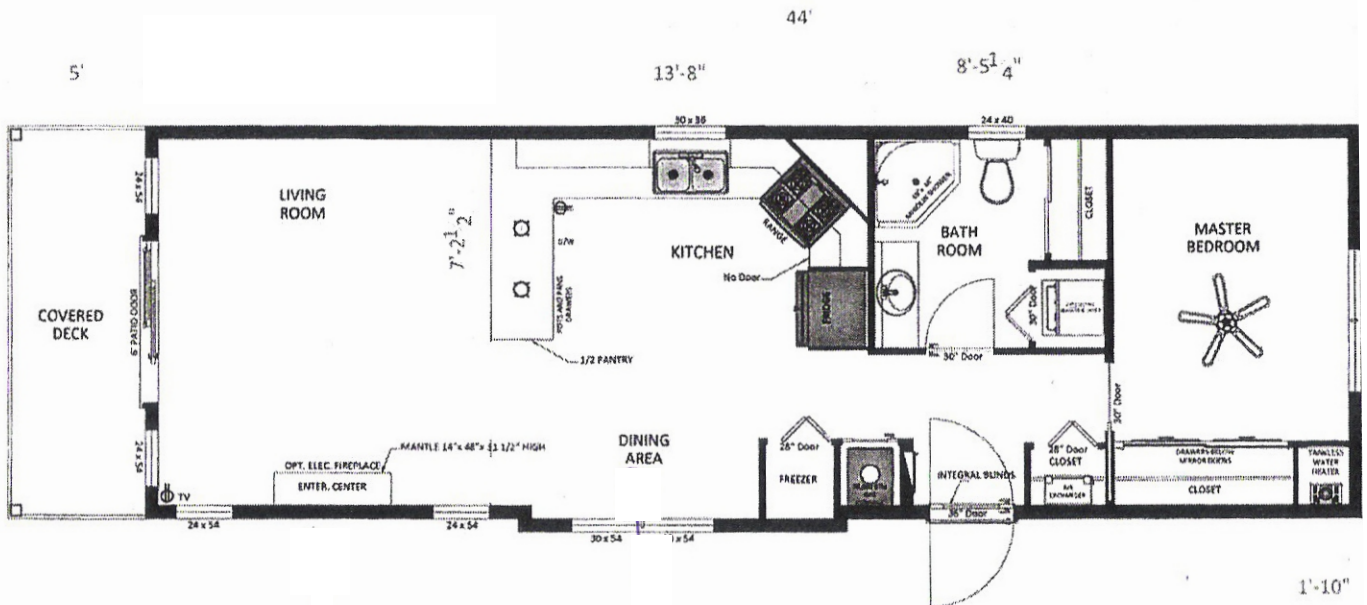


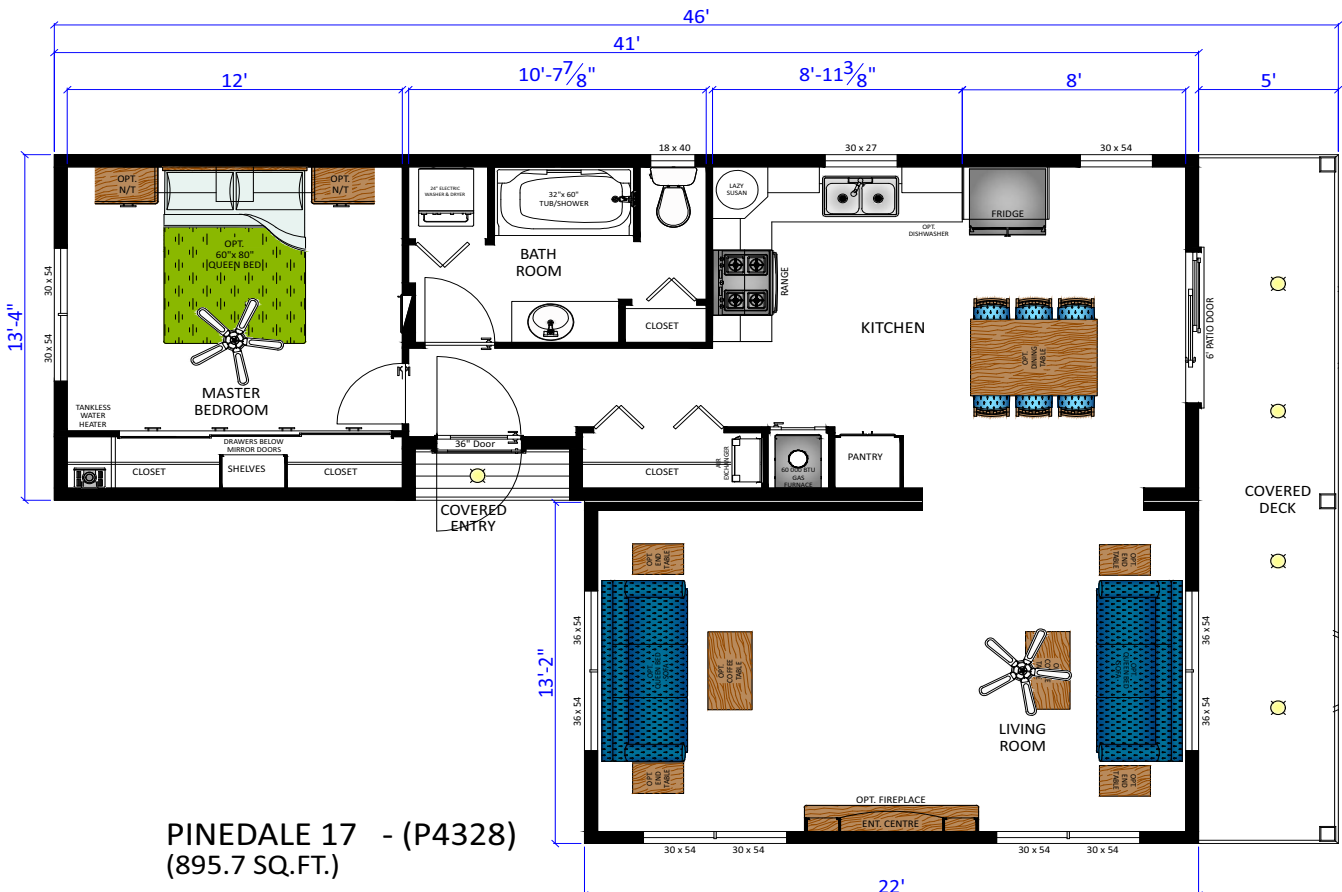
2018 Floorplans / Base Pricing

Add any options, please refer to back page for details
Prices are estimates as of Jan 1, 2018, subject to change with market and material changes.

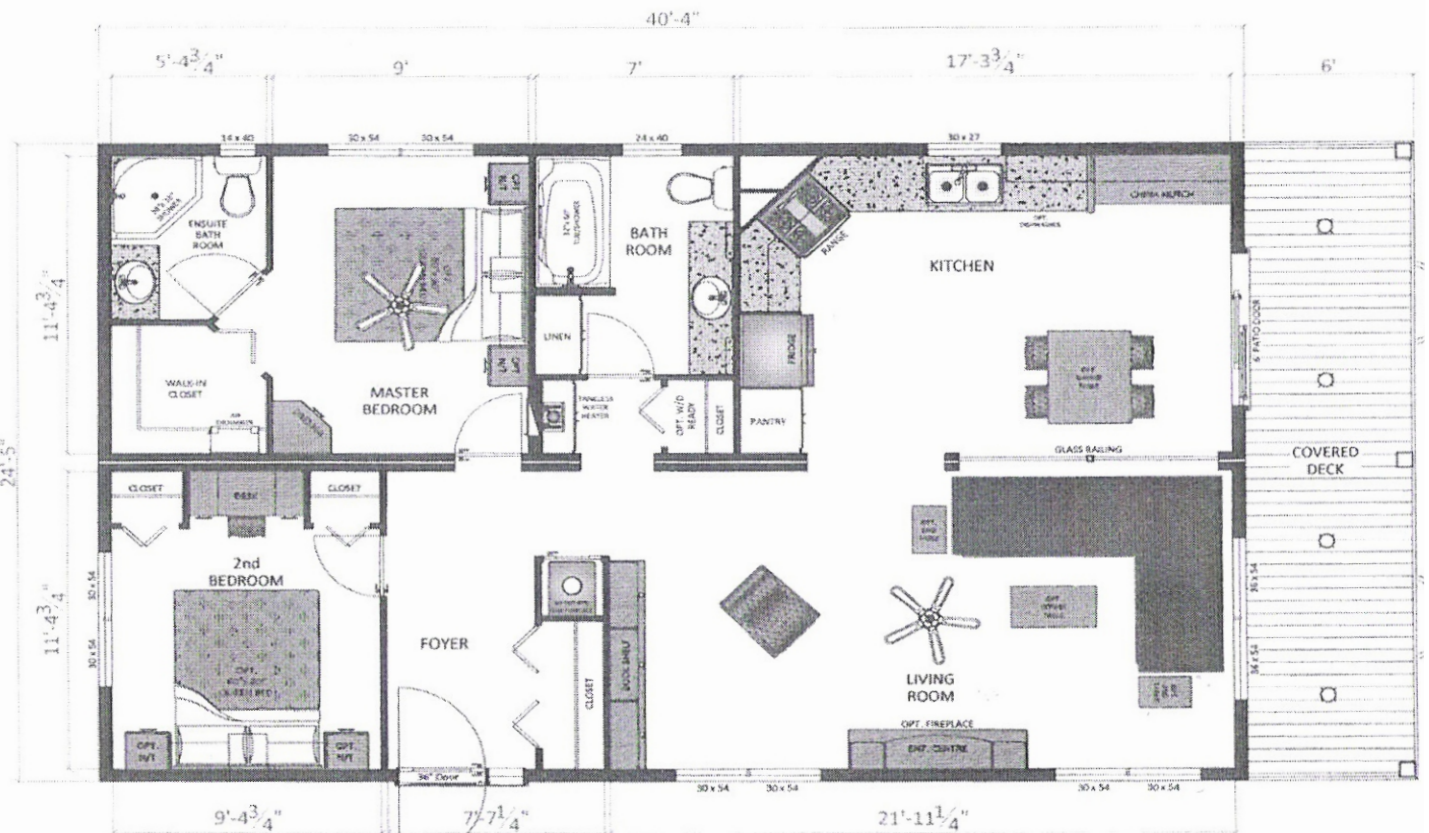
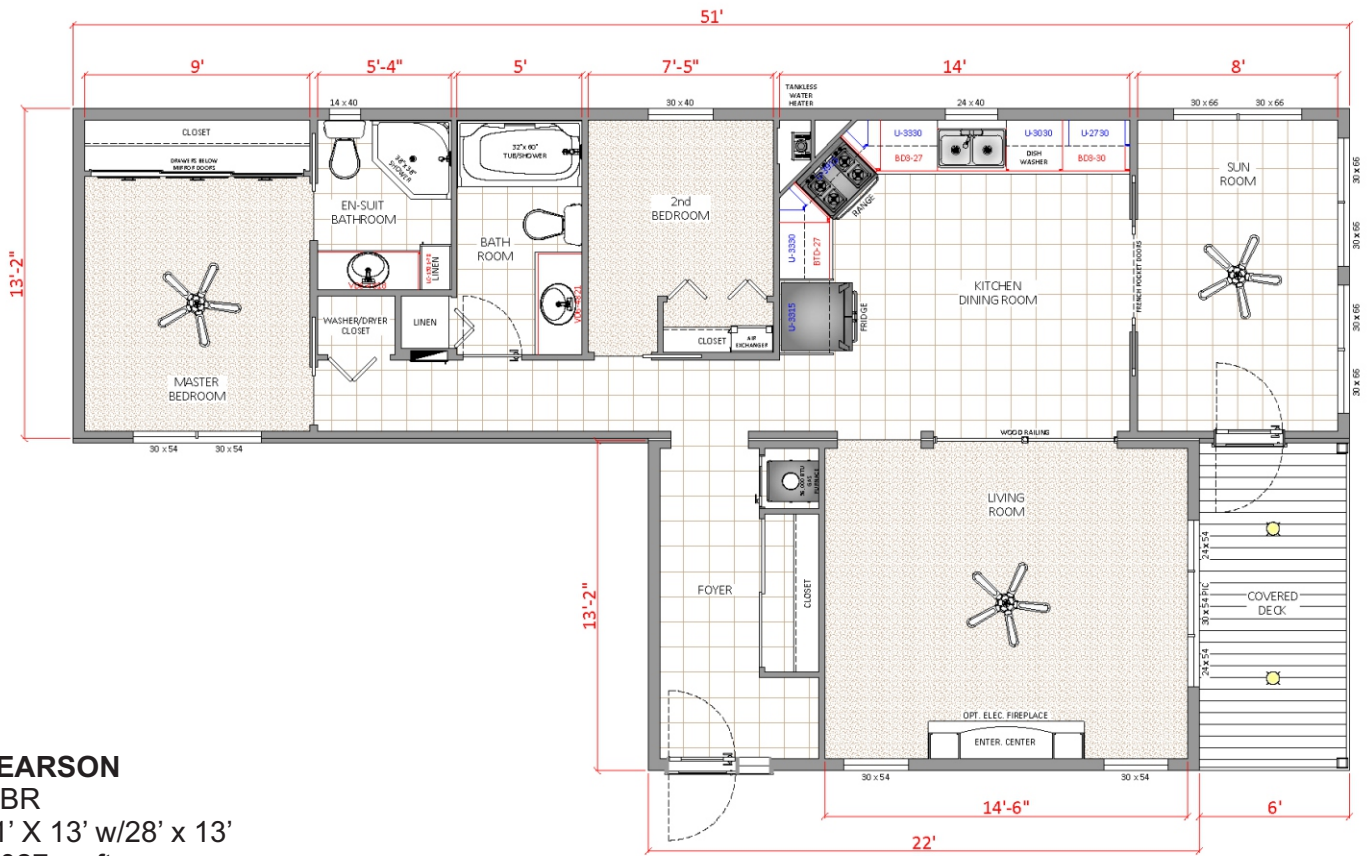


PARKLAND CUSTOM (P4514)
(626.3 SQ.FT.)

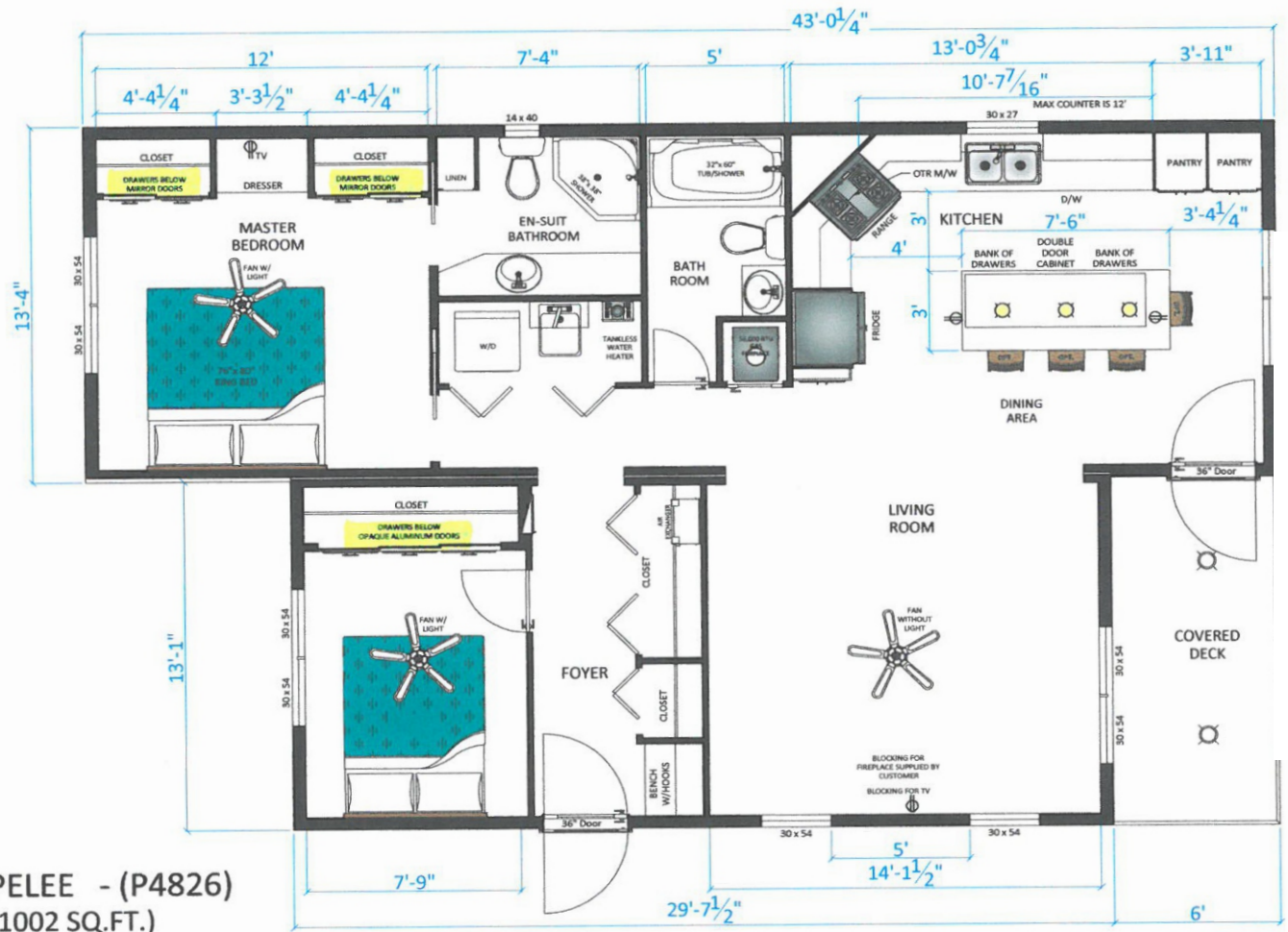
Starting at \$158,672



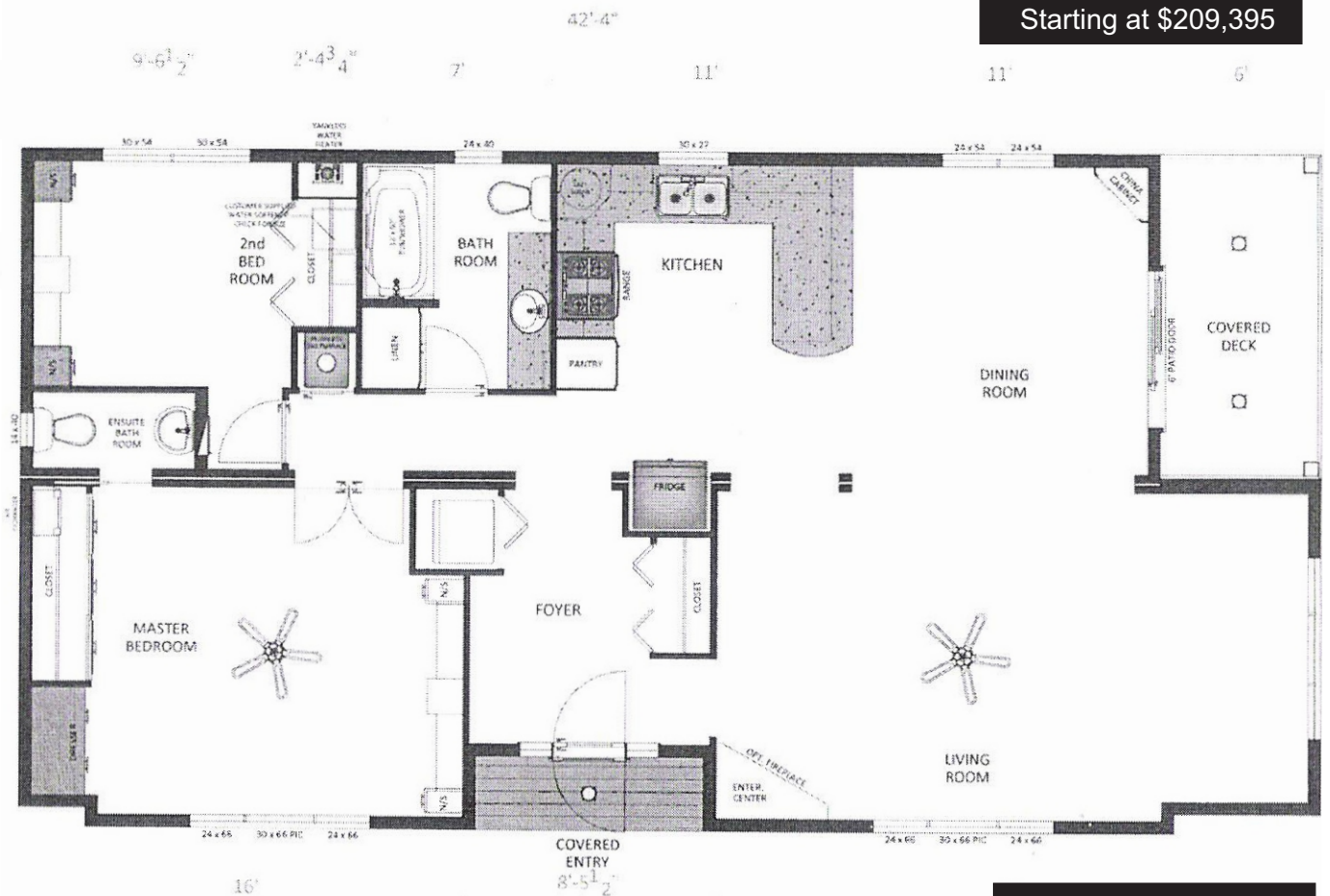
PINEDALE 17 - (P4328)
(895.7 SQ.FT.)



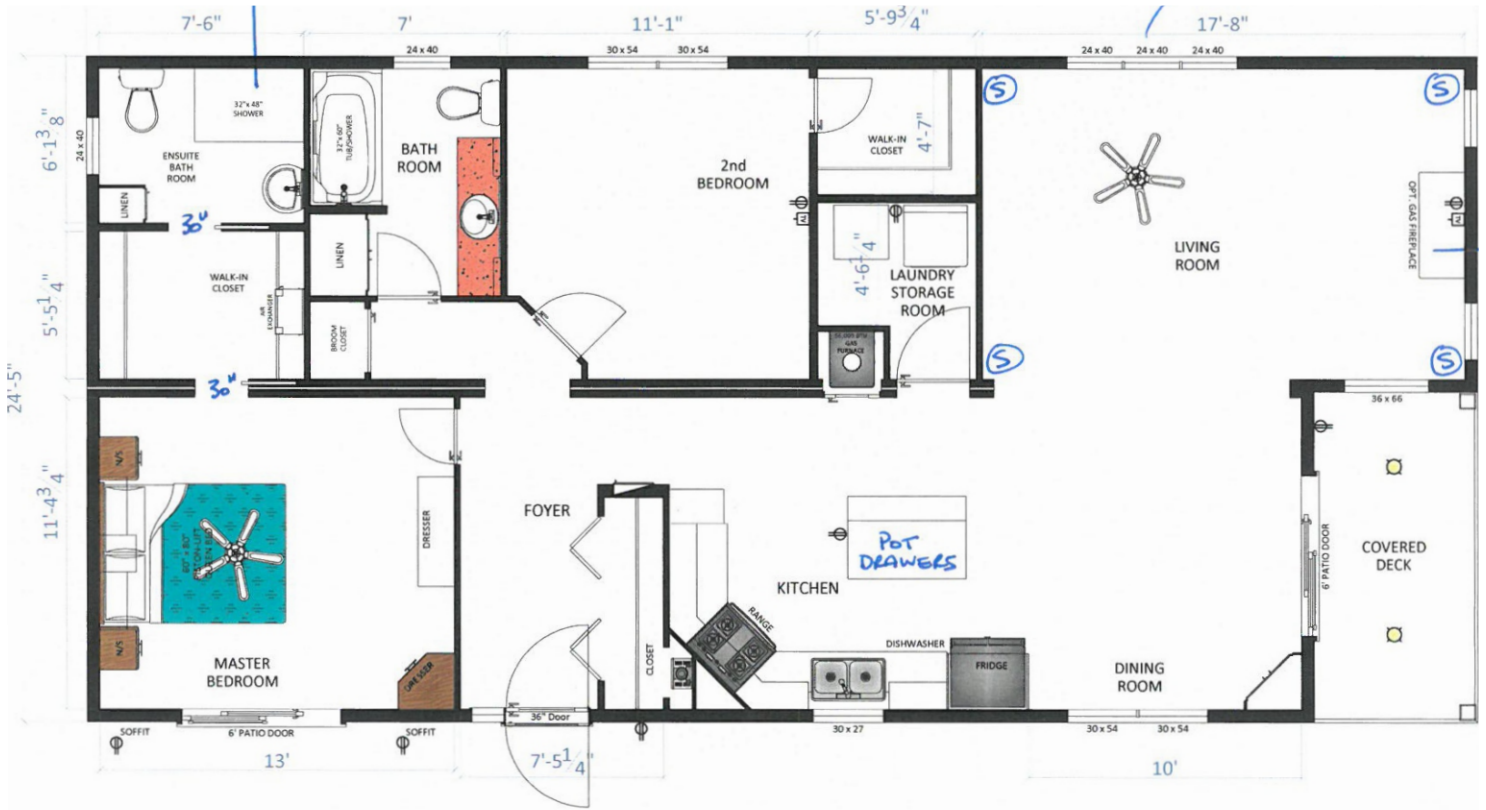
Starting at \$199,900



Starting at \$209,395

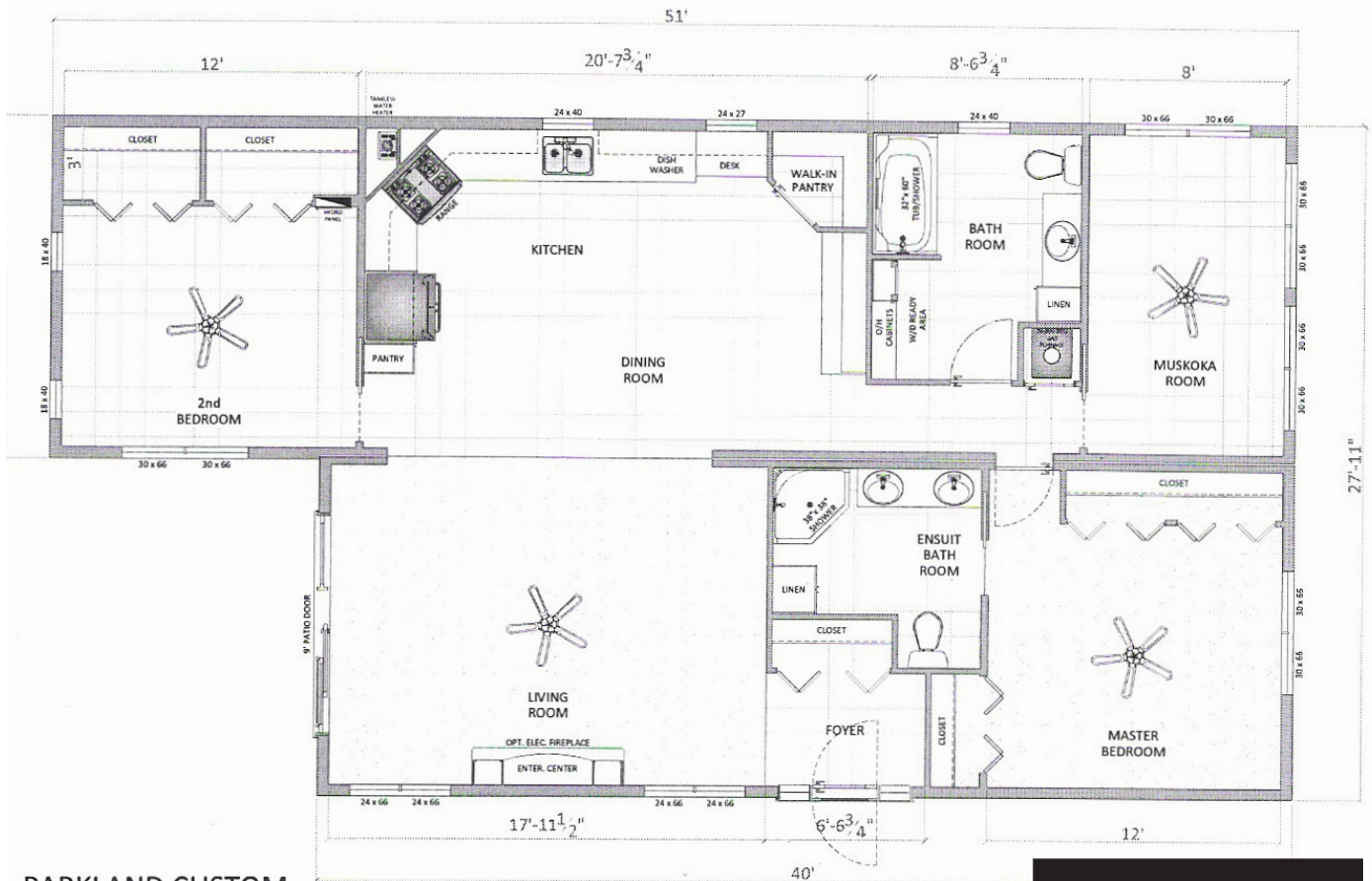


Starting at \$215,410



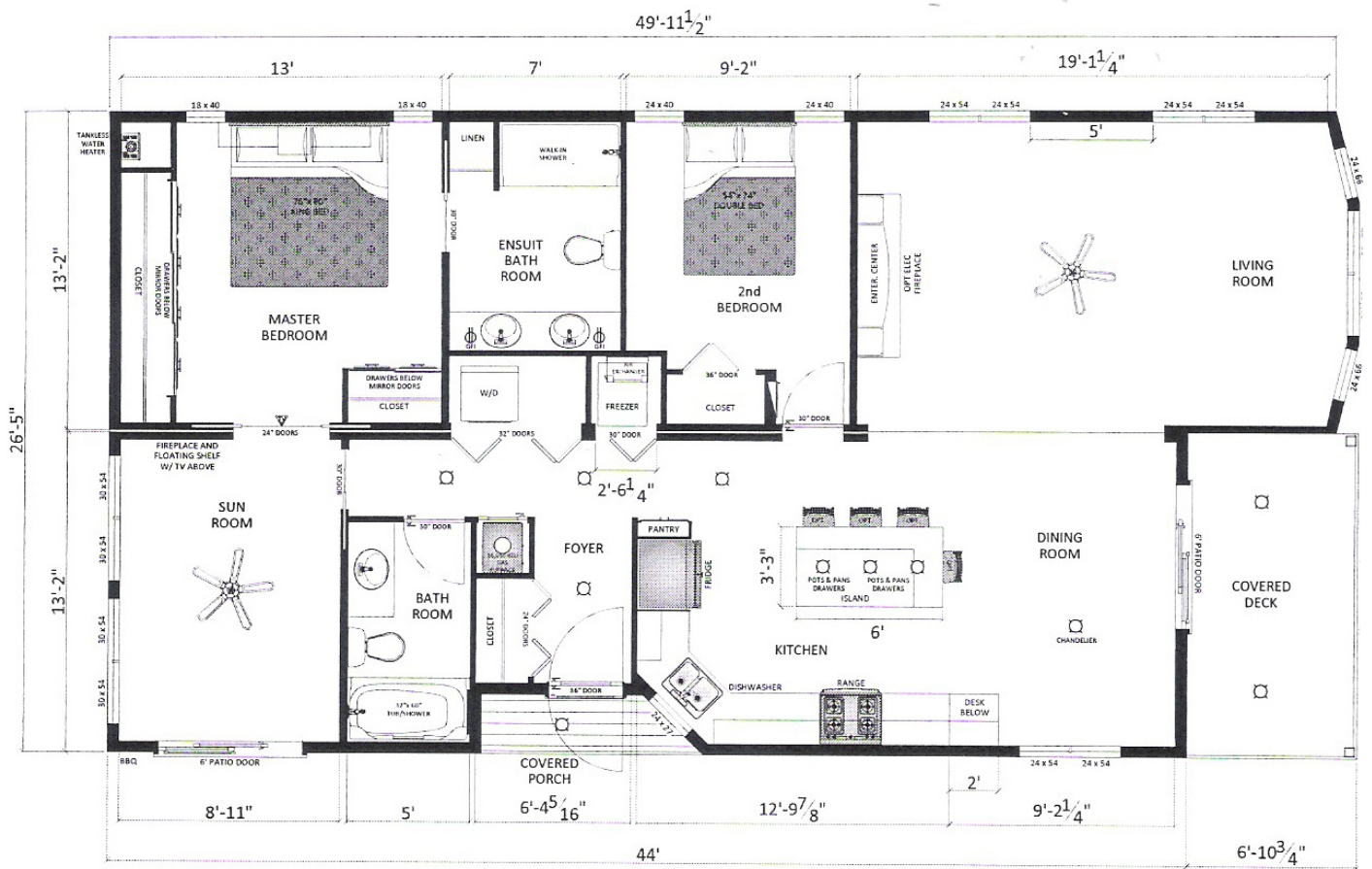
PARIS
(1218 SQ.FT.)

Starting at \$225,315



PARKLAND CUSTOM
(1270 SQ.FT.)

Starting at \$225,315



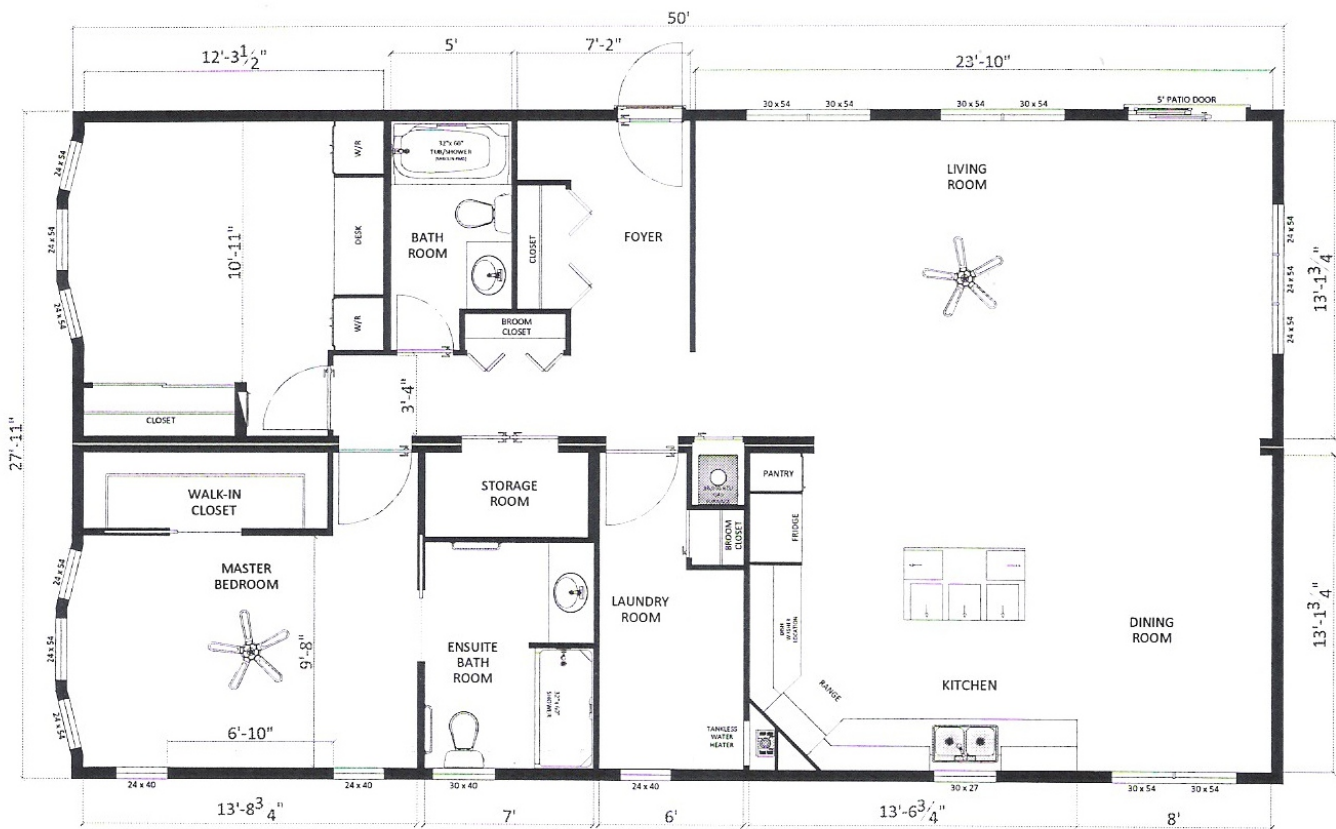
Starting at \$225,262



Starting at \$226,590

Starting at \$227,000

Starting at \$228,770



CUSTOM PLAN
(1404.2 SQ.FT.)

Starting at \$229,455

FEATURES AND CHOICES ARE AS OF Jan 1, 2018 AND ARE SUBJECT TO CHANGE THROUGHOUT THE YEAR, BASED ON CHANGE OF SUPPLIER or STOCK. We'll make every attempt to discuss any changes with you when placing your order.

Mobile Home Construction / Specs CSA Z-240

Your choice of colors: siding, interiors, shingles, shutters, cabinetry, window coverings
 2" x 6" wall construction R20 / 2" x 8" floor joists R26 insulation
 Dashwood double hung vinyl windows
 Day / night shades
 Urethane foam
 60,000 btu high efficiency furnace
 On demand tankless water heater
 Air exchanger
 50 amp breaker, wiring and plumbing to comply with
 25 year asphalt shingles
 Central heat and A/C

Preceding floorplans show furniture placed for visual effects and spacing. Base price does not include mobile furniture.

Base price *generally* includes the following (some variation with custom models):

Vinyl flooring throughout (can be upgraded to laminate, hardwood)
 Standard vinyl siding (can be upgraded to Sequoia Select or Canexel siding)

Standard Kitchen - all GE or Whirlpool appliances

Residential factory built kitchen, cabinetry available in Chocolate Pear, Southwest (grey/brown), 'off white'
 Stainless steel appliances (small credit for black or white)
 Range / convection oven, self cleaning oven
 OTR microwave (alternatively a built-in microwave)
 SS dishwasher
 19.5 French door bottom freezer/fridge

Options:

Upgrade to double oven
Add ice/water (internal or external) to fridge where possible

Living Room:

All cabinetry attached to walls, window coverings (day/night shades)
Bookcase if shown (option if not)
Entertainment centre with electric fireplace (can upgrade to propane gas)
All wall and ceiling lighting throughout (exterior coach light at door) can upgrade to pot lights or LED's
2 Ceiling fans (bedroom, living room) 2 TV cable/satellite outlets

Options: *Sofa Bed, Sectional, chairs, end tables, lamps, additional built-ins, bookcase etc.*

Bedrooms:

Carpeting or vinyl, all window coverings, all shelving and cabinetry as shown in layout
Closet (mirrored sliding doors, built in shelves or dresser can be added)

Options: *bed, coverings, end tables, end table lamps
Drawers under closet drawers
Solid or frosted glass sliding closet doors or bi-folds where possible*

Utility Room:

Electric washer / propane gas dryer, either stackable, side-by-side, top load or front load

Options:

*Add wooden cabinet or wire shelving as per your specs
Laundry tub*

Bathroom:

Tub / shower combination
Comfort height toilet
All cabinetry, sink, medicine cabinet, shelving as shown on your floorplan

Options:

*Jetted or soaker tub
Walk-in shower, frameless shower, with or without seat*

Doors:

White, hollow doors. Can be upgraded to solid pine stained to match interior trim

Please refer to the options package for additional add-ons and upgrades

PRICING includes:

- All move in costs (lot excavating, concrete pad, all utility hookups, winterize water lines, white vinyl insulated skirting)
- All setup costs and delivery costs by General Coach - 90% of your home will come pre-built in the factory. On site finalization takes 5 - 7 days (installation and setup, marry the two halves, remove hitch and wheels, lower, block and level, hook up A/C - 3-5 days)
- Eavestrough, downspouts, white aluminum railing on front deck
- Average 10' x 20 p.t. deck, skirted, p.t. railings (can be upgraded to aluminum spindles or aluminum posts), one or two steps depending on floorplan, landings per floorplan. Any adjustment to the suggested decks and steps, size and design is welcome and will result in an increase or decrease in cost.
- 10' x 10' or 8' x 12' custom shed built to match your home
- Single car 10' x 20' concrete driveway (can be upgraded to a double if lot size permits)
- Applicable building permits (permit cost increases of size of deck or home increases)

ADD: 13% sales tax (eligible for a 60% tax rebate) - (pls ask if you need help with the application)