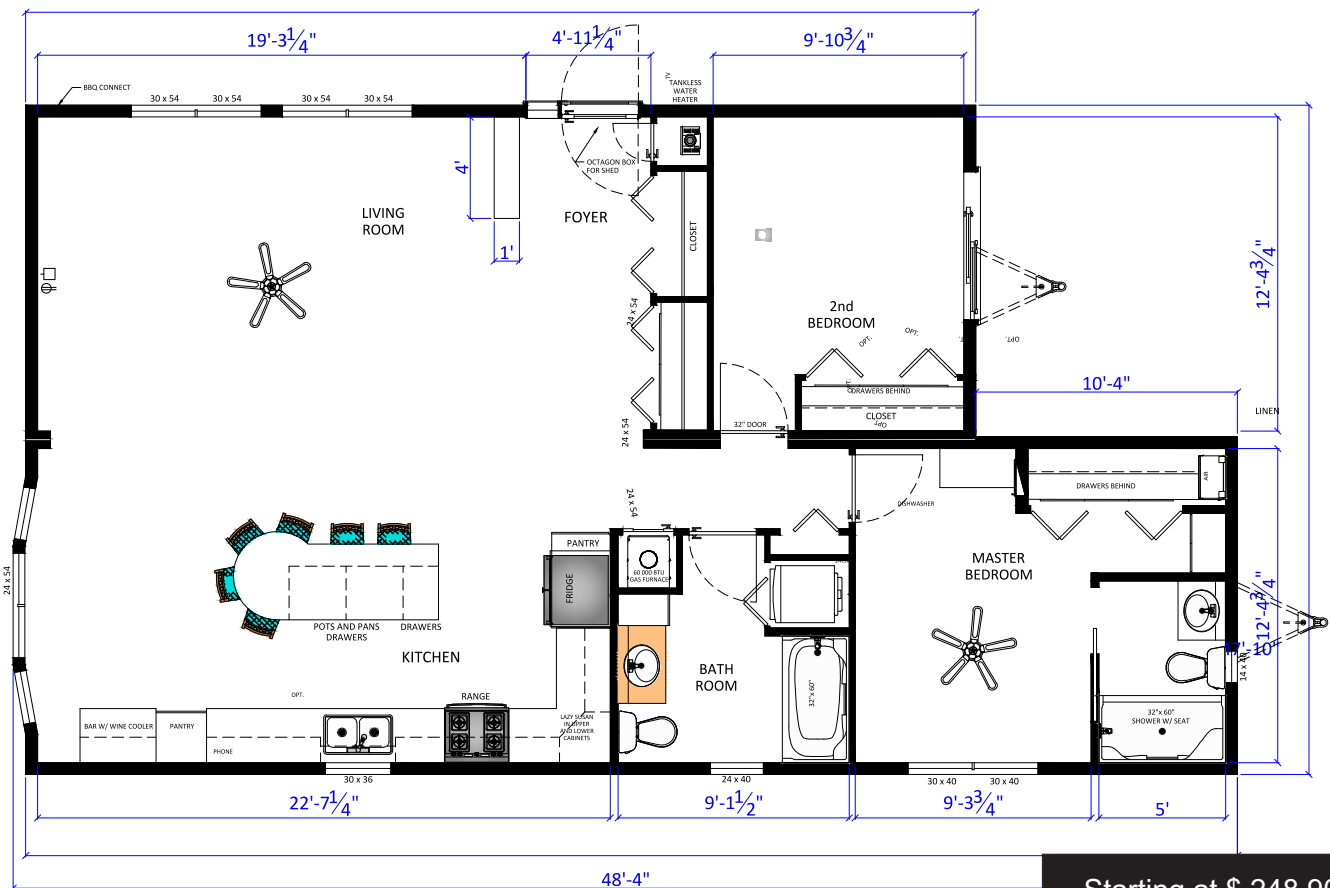
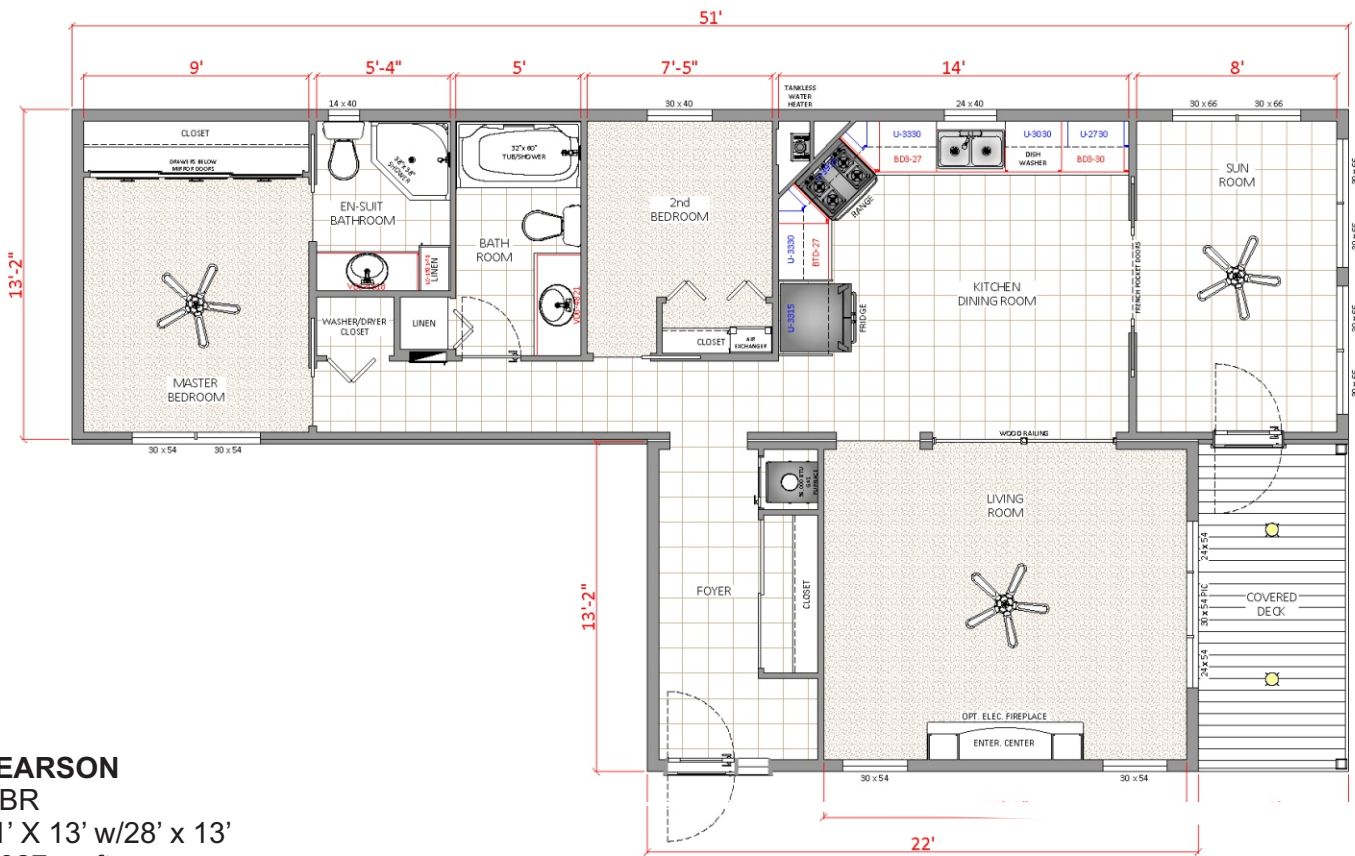


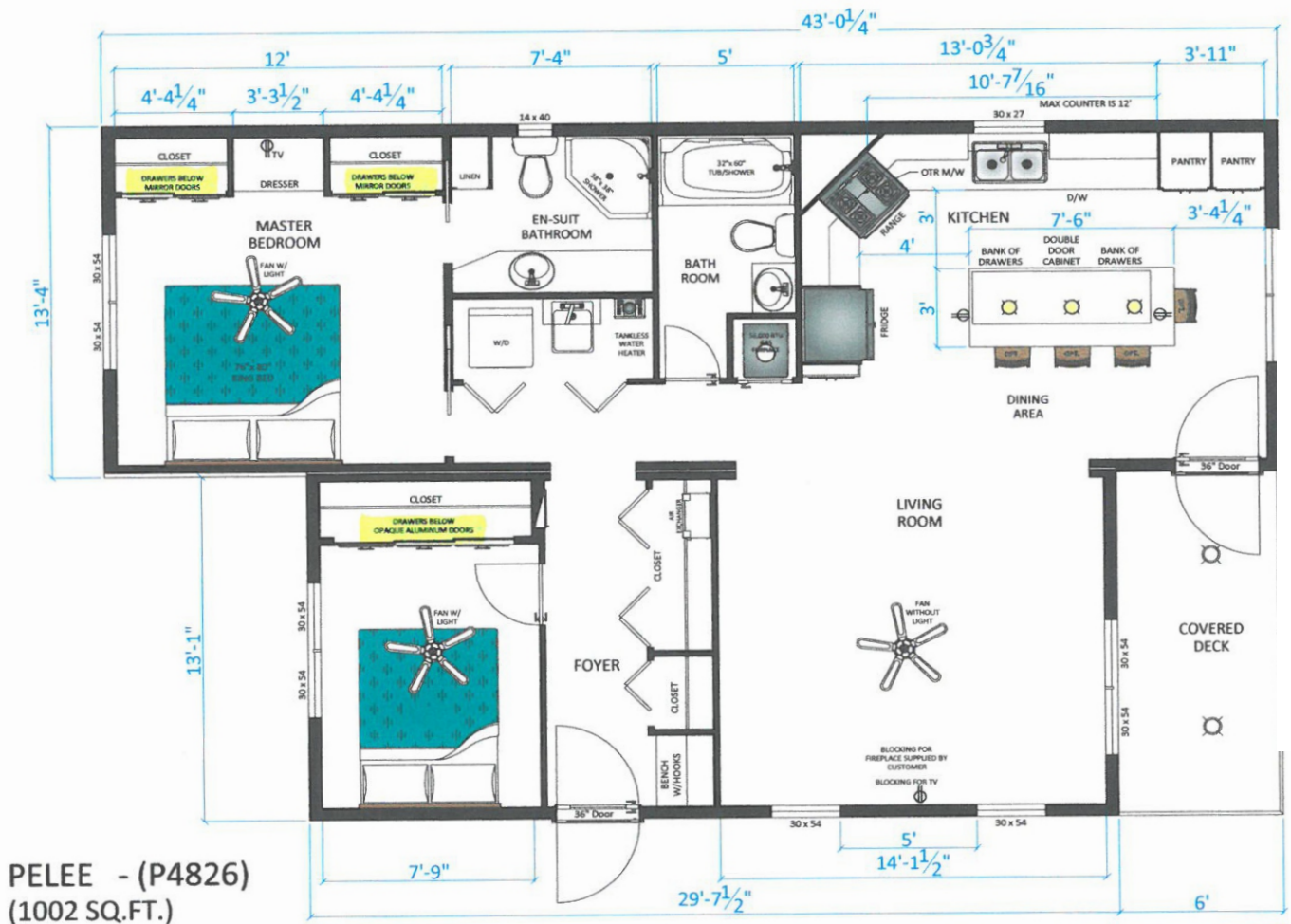
*Add any options, please refer to back page for details*  
*Prices are estimates as of Jan 1, 2020, subject to change with market, material changes*

[illegible]

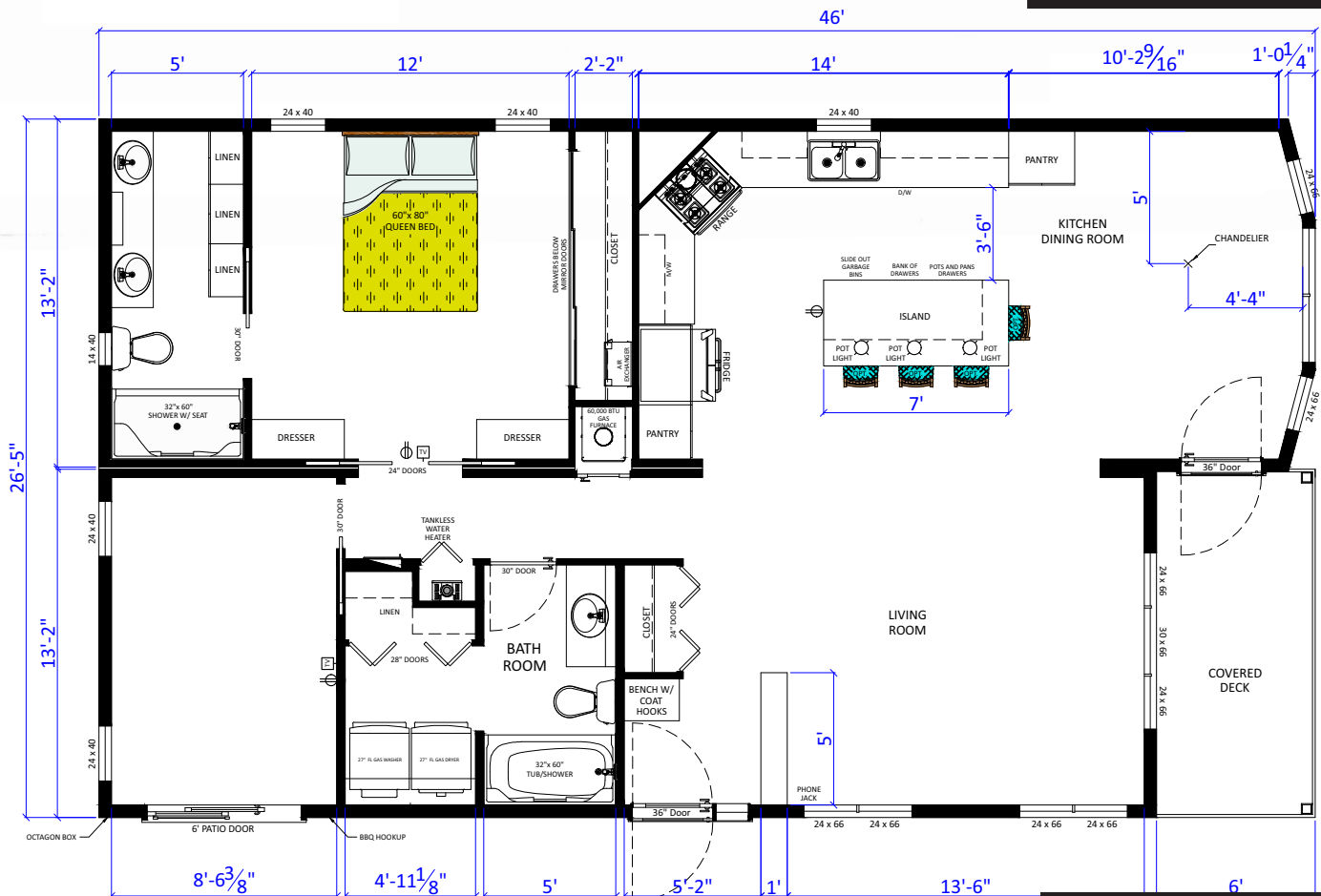
PINEDALE 19 - (P4928)  
(895.7 SQ.FT.)

Starting at \$ 242,555



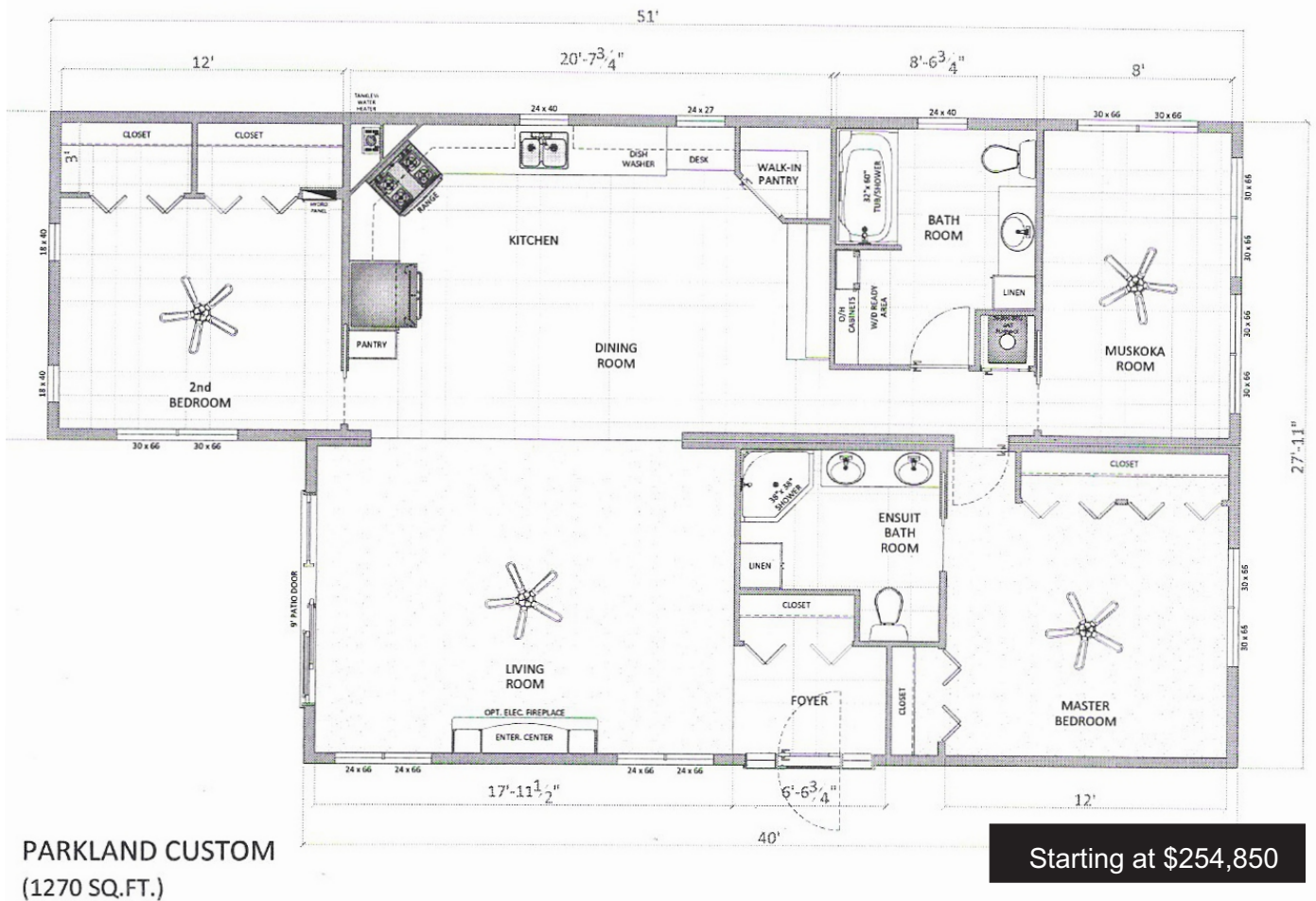
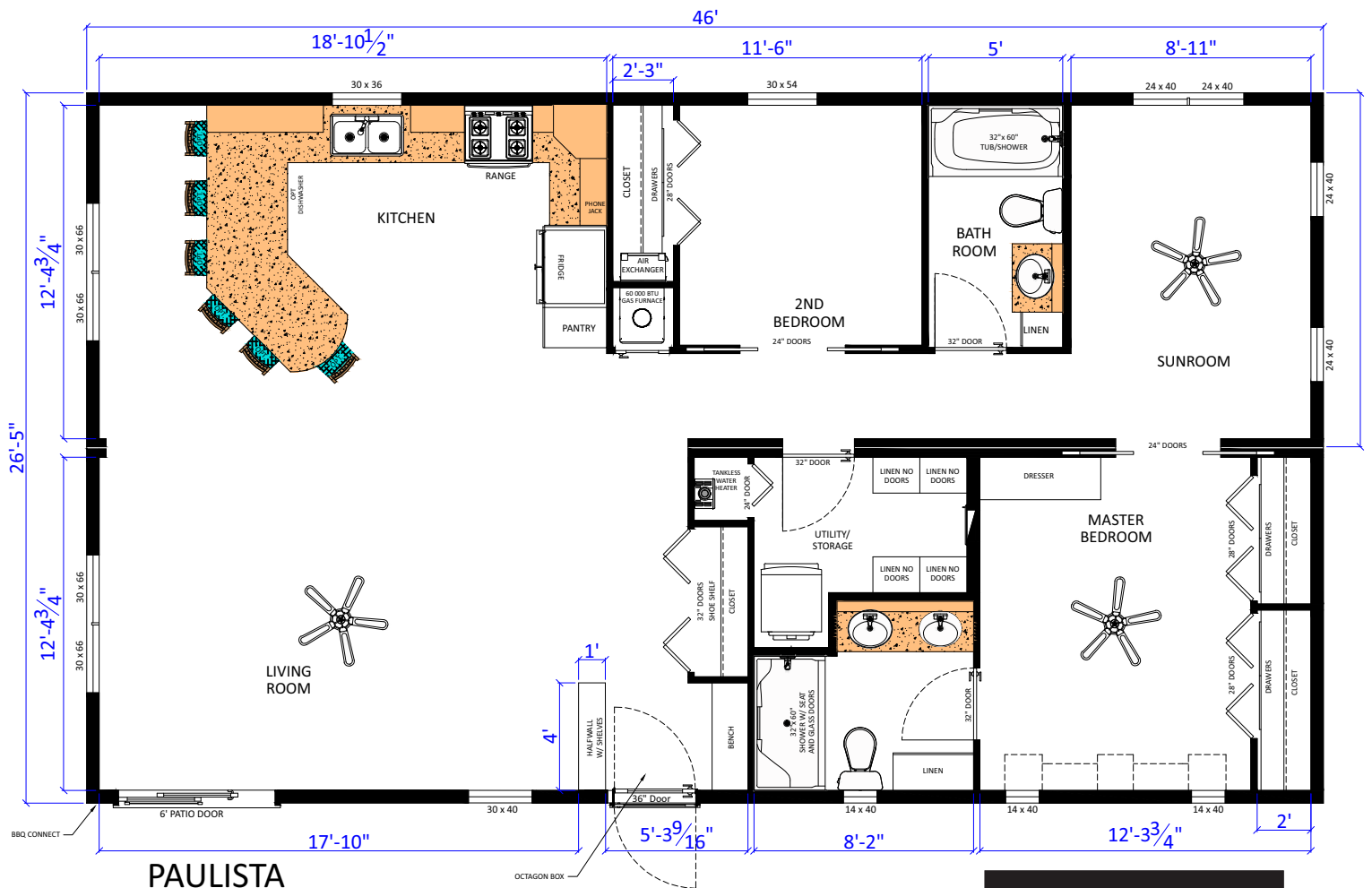


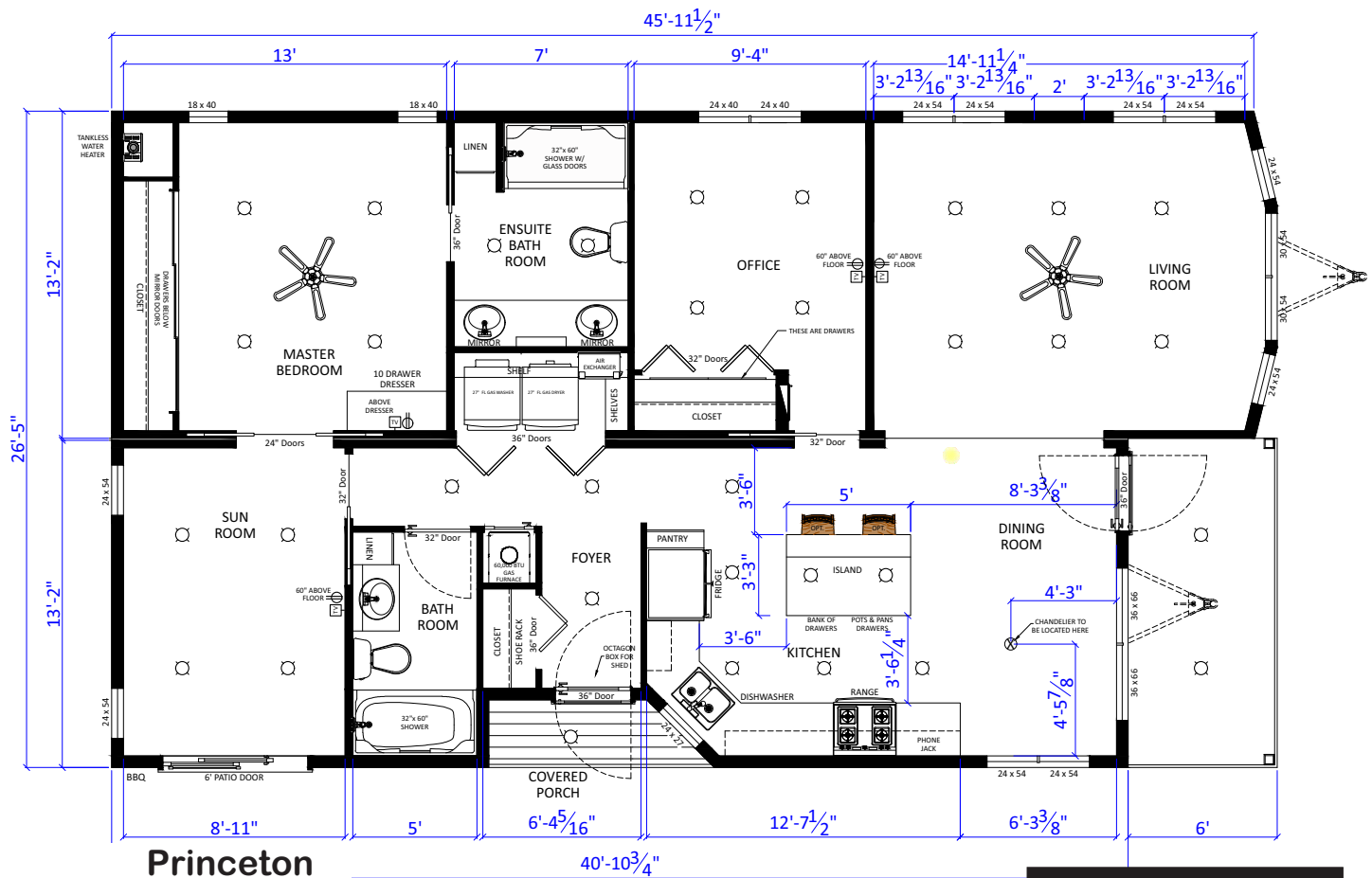
Starting at \$242,395



Starting at \$253,410



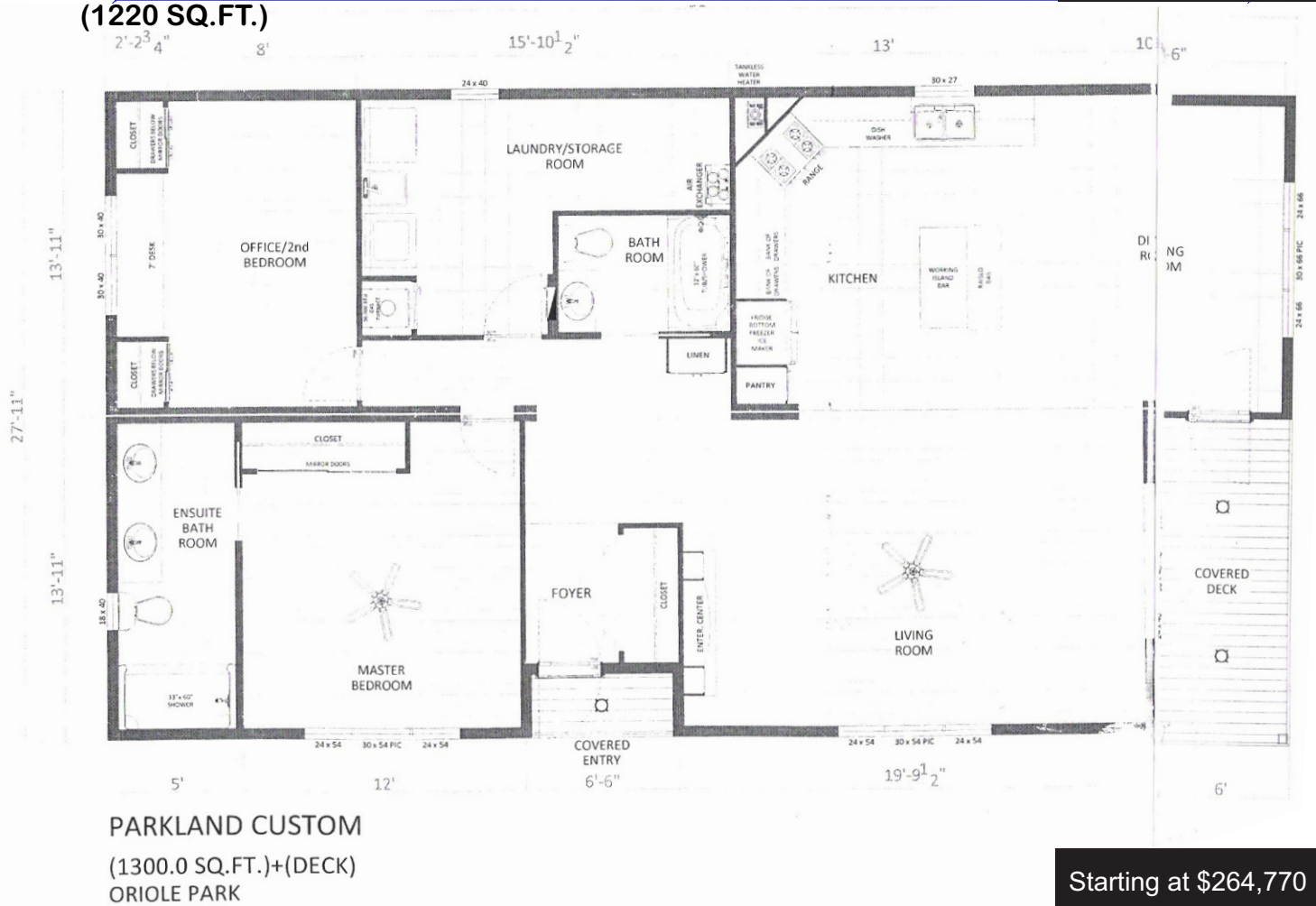
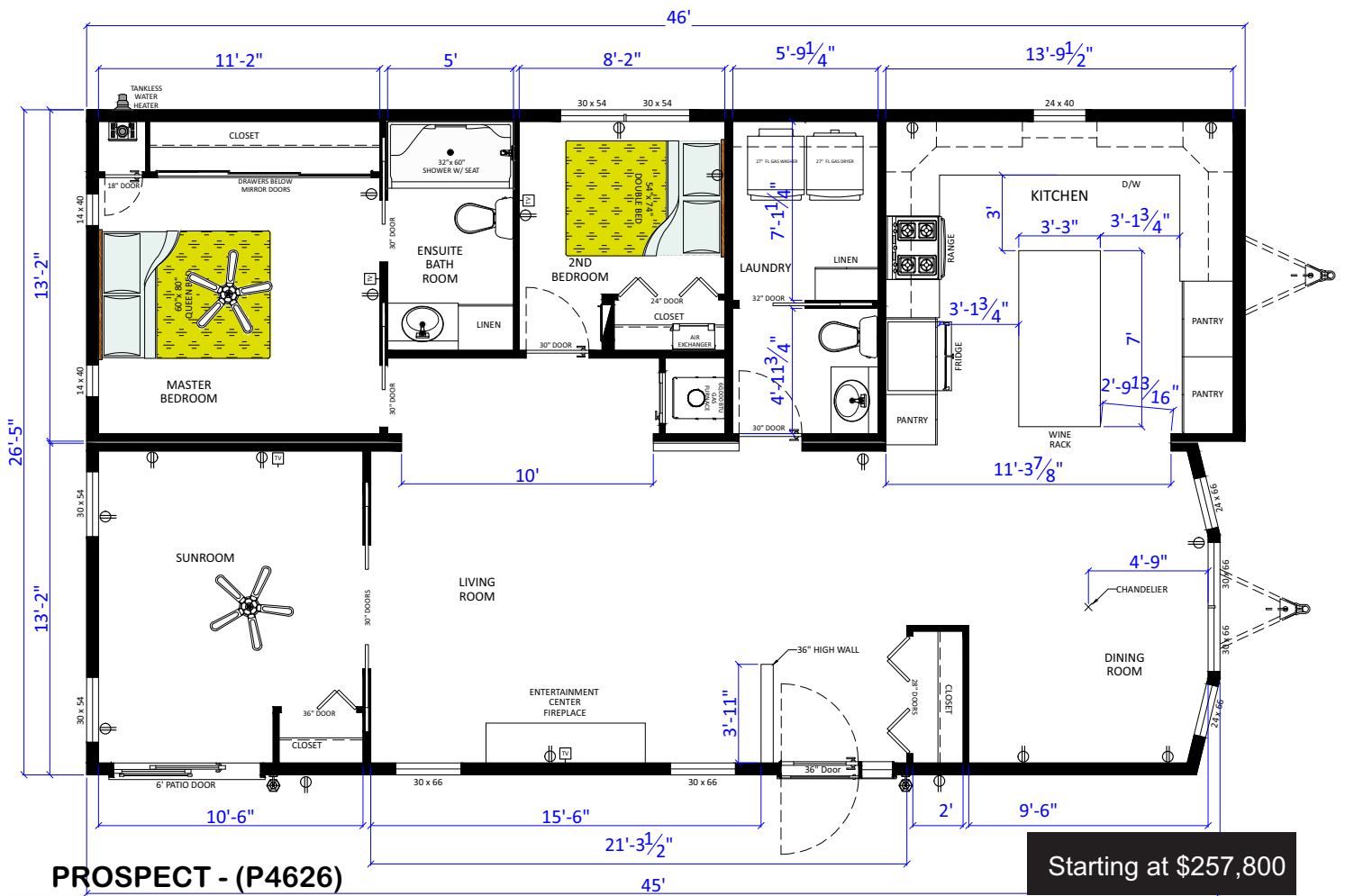




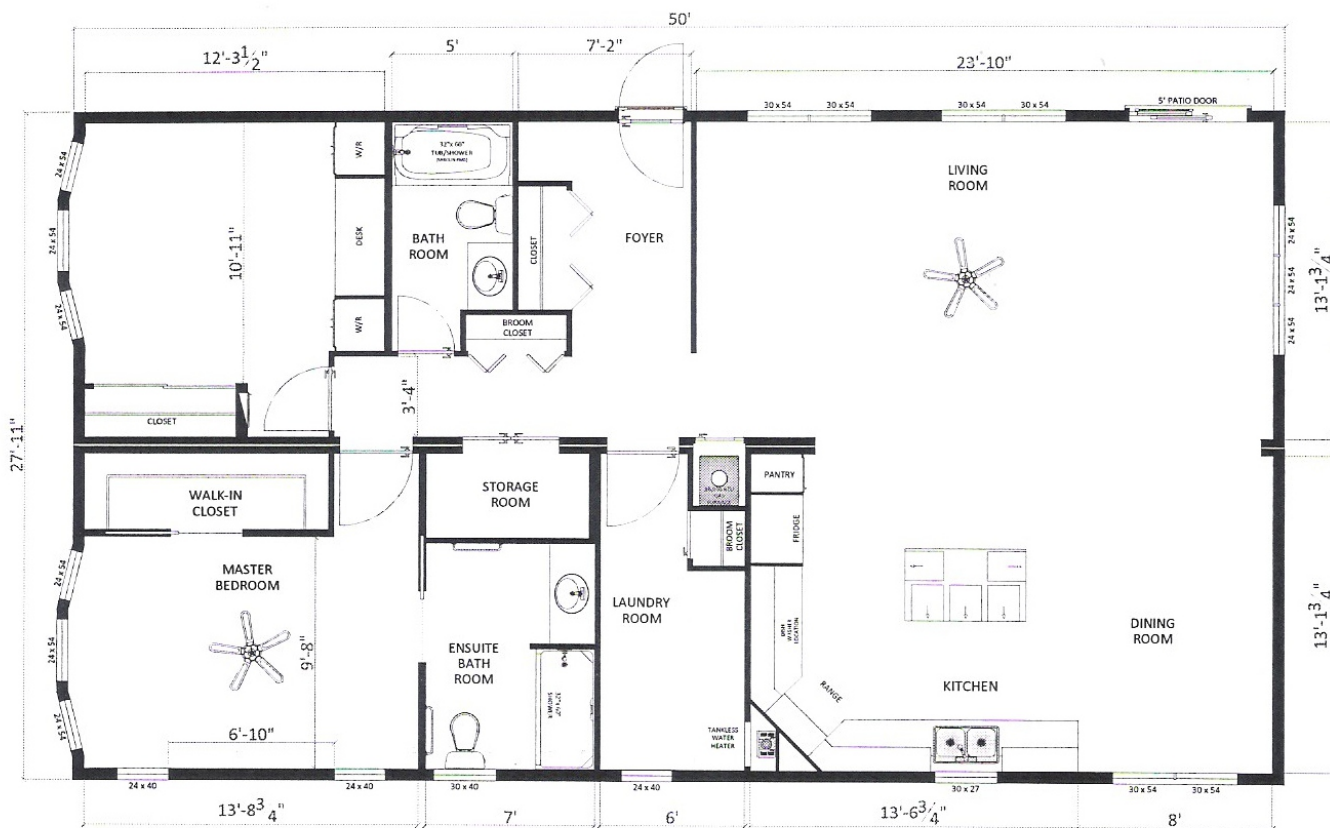
Starting at \$254,262



Starting at \$266,590







CUSTOM PLAN  
(1404.2 SQ.FT.)

Starting at \$279,455

**FEATURES AND CHOICES ARE AS OF Jan 1, 2020 AND ARE SUBJECT TO CHANGE THROUGHOUT THE YEAR, BASED ON CHANGE OF SUPPLIER or STOCK. We'll make every attempt to discuss any changes with you when placing your order.**

#### **Mobile Home Construction / Specs CSA Z-240**

Your choice of colors: siding, interiors, shingles, shutters, cabinetry, window coverings  
 2" x 6" wall construction R20 / 2" x 8" floor joists R26 insulation  
 Dashwood or NorthStar double hung vinyl windows  
 Day / night shades  
 Urethane foam  
 80,000 btu high efficiency furnace  
 On demand tankless water heater  
 Air exchanger  
 25 year asphalt shingles  
 Central heat and A/C

Preceding floorplans show furniture placed for visual effects and spacing. Base price does not include mobile furniture.

Base price *generally* includes the following (some variation with custom models):

Vinyl flooring throughout (can be upgraded to laminate, hardwood)  
 Standard vinyl siding (can be upgraded to Sequoia Select or Canexel siding)

#### **Standard Kitchen - all GE appliances**

Residential factory built kitchen, cabinetry available in Latitude North (white'ish), Southwester (grey/brown), Sunday Brunch (brown)  
 Stainless steel appliances (can order black)  
 Range / convection oven, self cleaning oven  
 OTR microwave (alternatively a built-in microwave)  
 SS dishwasher  
 19.5 French door bottom freezer/fridge

**Options:**

Upgrade to slide-in range  
Add ice/water (internal or external) to fridge where possible

**Living Room:**

All cabinetry attached to walls, window coverings (day/night shades)  
Bookcase if shown (option if not)  
Entertainment centre with electric fireplace (can upgrade to propane gas)  
All wall and LED ceiling lighting throughout (exterior coach light at door) LED pot lights  
2 Ceiling fans (bedroom, living room) 2 TV cable outlets

***Options:*** *Sofa Bed, Sectional, chairs, end tables, lamps, additional built-ins, bookcase etc.*

**Bedrooms:**

Carpeting or vinyl, all window coverings, all shelving and cabinetry as shown in layout  
Closet (mirrored sliding doors, built in shelves or dresser can be added)

***Options:*** *bed, coverings, end tables, end table lamps*  
*Drawers under closet drawers*  
*Solid or frosted glass sliding closet doors or bi-folds where possible*

**Utility Room:**

Electric washer / propane gas dryer, either stackable, side-by-side, top load or front load

***Options:***  
*Add wooden cabinet or wire shelving as per your specs*  
*Laundry tub*

**Bathroom:**

Tub / shower combination  
Comfort height toilet  
All cabinetry, sink, medicine cabinet, shelving as shown on your floorplan

**Options:**  
Jetted or soaker tub  
Walk-in shower, with or without seat

**Doors:**

White, hollow doors. Can be upgraded to solid pine stained to match interior trim

Please refer to the options package for additional add-ons and upgrades

**PRICING includes:**

- All move in costs (lot excavating, concrete pad, all utility hookups, winterize water lines, white vinyl insulated skirting)
- All setup costs and delivery costs by General Coach - 90% of your home will come pre-built in the factory. On site finalization takes 5 - 7 days (installation and setup, marry the two halves, remove hitch and wheels, lower, block and level, hook up A/C - 3-5 days)
- Eavestrough, downspouts, white aluminum railing on front deck (eaves/spouts on shed, gutter guards not included, optional)
- Average 200 sf p.t. deck, p.t. skirted, aluminum spindles, 4' steps per floorplan. Any adjustment to the suggested decks and steps, size and design is welcome and will result in an increase or decrease in cost.
- 10' x 10' or 8' x 12' custom shed built to match your home, installed on concrete pad
- Single car 10' x 20' concrete driveway (can be increased if lot size permits, priced accordingly)
- Applicable building permits (permit cost increases as size of deck or home increases)

**ADD: 13% sales tax (eligible for a 60% tax rebate) - (pls ask if you need help with the application)**